

Renderings

Celebrating Over

50
Years

NARI CotY
2023 AWARDS
MINNESOTA



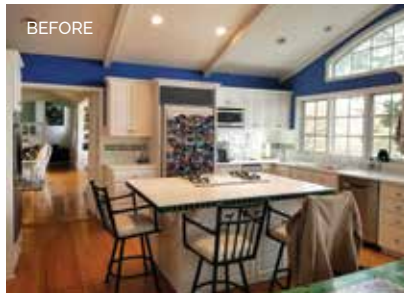
SHOREWOOD

Cottage Kitchen

An elegant update to a lakeside kitchen that both preserves and highlights the home's unique history and charm.

This 1920 home had been in the family for decades. Its hidden lakeside location, situated down a winding path, was part of its unique charm. The owners had raised their family in the home and lovingly maintained it over the years. As the house approached 100 years old, the kitchen was ready for an update.

When planning the remodel and making selections, the owners wanted the kitchen to look fresh, modern and elegant, while maintaining the classic feel and traditional elements that tie the space to the rest of the century-old home.



BEFORE

The existing kitchen did not reflect the home's charm and character.



Contact Us Today for a Complimentary Remodeling Consultation!

(952) 888-2225 | www.plekkenpol.com



Plekkenpol
BUILDERS, INC

Remodeling

401 East 78th Street, Bloomington | 952.888.2225 | www.plekkenpol.com

Learn More:



Cottage Kitchen



Function & Design

One of the owners' main concerns was the too-small island. The new island is twice as large and seats at least five. It is a multi-purpose piece with custom storage on every side, from the pull-up mixer stand, to the spice cabinet, to garbage, recycling and composting bins. The wipe-off bar stools are perfect for grandchildren coming in from the lake. "It's such a great space for a crowd or just the two of us," said the owner.

Character & Charm

Throughout the remodel, retaining and restoring the home's original character was a priority. Updated functional storage was added while maintaining the home's traditional aesthetic.

The detailed doors leading to the dining room were a key architectural element that were retained and refinished. Cabinets up and over the doorway emphasize the height of the vaulted ceiling.



2023 NARI Contractor of the Year GOLD Award Winner – Kitchen \$150,000 to \$200,000



Detailed doors, a key architectural element, were refinished.



The new, larger island offers views of the lake.



Breakfast nook



Kitchen island

Layers of Texture

The breakfast nook is the owner's "happy place" (far left). "I make coffee and sit at the little table under the lights early every morning," she said. "It just starts my day."

Aesthetically, the owners wanted to keep the look pure and white, but also add some dimension and depth. Carved posts adorn the island (left). Layers of texture in the form of bead board walls, glossy herringbone tile and a V-groove paneled ceiling provide points of interest against the white backdrop.

Specialty lighting warms the space. Even on dark winter evenings, the kitchen is a cozy, well-lit room. "I can't tell you how much we love our kitchen!" said the owner. "What I love most is that you listened and delivered that vision. It suits our needs perfectly and brings me joy every day."

Photos by Spacecrafting



"Best of Houzz" Award Winner

Plekkenpol Builders Wins 2024 Award for Customer Service



Plekkenpol Builders has been awarded the 2024 "Best of Houzz" award for Service.

"Best of Houzz" awards are given based on the prior year's work. They are awarded to professionals who contribute great content to the Houzz community and who provide rave-

worthy customer service according to their Houzz rating and client reviews.

"Best of Houzz" is based on the actions of millions of Houzz users all over the world. Just 3-4% of the three million home design and remodeling professionals on Houzz receive this award each year. We are honored to be recognized for this achievement!

Plekkenpol Builders Named 2024 Regional CotY Award Winner

Region 3 North Central Winner



Plekkenpol Builders was named 2024 Regional Contractor of the Year (CotY) winner by the National Association of the Remodeling Industry for Basement Under \$100,000.

Our clients' laundry room/dog wash project in Minneapolis was selected as the Region 3 North Central winner, an area that includes contractors from Illinois, Iowa, Kansas, Minnesota, Missouri, Nebraska, North Dakota, South Dakota and Wisconsin.

Each year, NARI presents CotY Awards to members who have demonstrated outstanding work through their remodeling projects. The CotY Awards are the highest form of recognition by industry leaders and peers. This year, NARI received over 600 entries from across the United States representing over \$230 million in remodeling projects.

Winning a Regional CotY Award is a distinguished honor, and we are thrilled to receive this recognition!



Region 3 North Central Winner

Region 3 North Central Winner, Basement Under \$100,000 Project
Manager: Sarah Maly, Production Supervisor:
Bryan Stith

Spring Remodelers Showcase®

Thanks for Stopping By!

Thank you to everyone who stopped out during the Parade of Homes Spring Remodelers Showcase!

We enjoyed sharing this warm and cohesive kitchen and main level remodel with our visitors. Thank you to the homeowners for allowing us to "showcase" their home's many custom details, our workmanship and attention to detail first-hand.

If you missed the Showcase weekend, photos of this home, as well as past Showcase homes, can be viewed on our website at www.plekkenpol.com/gallery/showcase.



Spring Showcase Home
April 5-7, 2024

Understanding Allowances and Product Selections



It would be ideal for all selections to be made prior to the signing of a contract and specifications. However, when a selection can not or has not been made, an allowance is specified. For example, you may want to see the cabinets in place before you select your cabinet handles.

Your Project Manager will estimate allowances based on the details in the overall scope of the work, the level of complexity, other selections you have made and ideas you have discussed.

Once the total price* for each product is determined, that total will be deducted from your allowance and the remainder of the allowance, if any, is applied as a credit against your next scheduled payment.

Once you view the myriad products available and the various levels of functionality, materials, appearance and details, you may decide to select a product that exceeds the allowance specified. If you exceed the specified allowance, you will be charged the difference between the allowance and the total price* of your selection.

The difference between each individual allowance and your corresponding selection will be listed separately on your statement(s) or change order(s).

Total price equals the base price plus any ancillary components, handling and delivery charges, taxes and any other costs directly related to product.*

***Ancillary components refers to parts, accessories and materials that are required for a selection to be fully operable that are often selected and purchased separately. For example: flusher handle for toilet, faucet for sink, light bulb for fixture, pulls or handles for drawers and cabinets, etc.*

For other helpful Homeowner Resources, visit our website at www.plekkenpol.com/resources.

Remodeling

Plekkenpol

BUILDERS, INC

401 East 78th Street
Bloomington, MN 55420
(952) 888-2225
www.plekkenpol.com

Inside:



- **Cottage Kitchen**
An elegant update to a lakeside kitchen
- **In the News**
Regional CotY award winner and more
- **Understanding Allowances and Selections**
- **Project Snapshot**
Beverage and Coffee Station

The *Difference* is in the *Details*™



Licensed & Insured | MN Lic BC001797



PROJECT SNAPSHOT

Kitchen Organization Beverage and Coffee Station

A new beverage and coffee station offers easy access to drinks and keeps countertops clutter-free.

When an Edina family began planning their kitchen remodel, one of the items at the top of the list was a beverage center/coffee station. They wanted convenient access to drinks, equipment and supplies, but they also wanted to keep countertops free of clutter.

The beverage area is to the right as you enter the kitchen – perfect when welcoming visitors. Appliances can be tucked away and concealed when not in use. An assortment of teas is displayed below, and a drawer keeps coffee pods neat. Cups and glasses are conveniently stored in a glass-front cabinet above.

The *Difference* is in the *Details*™