

# Renderings

Vol. 9, No. 4

FALL 2022



Celebrating Over  
**50**  
Years

MINNEAPOLIS

## Urban Lake Views



Old World charm meets modern elegance in this turn-of-the-century home located across the street from Bde Maka Ska.

Like something out of a storybook, this historically preserved house with its circular covered front porch was hard to miss. When it was time to modernize the 1900-built home, maintaining its character was vital. Both the main and upper levels were gutted and thoughtfully remodeled, including a new gourmet kitchen, enlarged owners' suite, restored two-sided fireplace and expanded wrap-around deck.

The kitchen is the star. Relocating the adjacent powder room allowed us to enlarge and reconfigure the space, adding a bigger center island, custom amenities and contemporary finishes.

*Cont. on next page*



The kitchen was opened and reconfigured to maximize space.

Contact Us Today for a Complimentary Remodeling Consultation!

(952) 888-2225 | [www.plekkenpol.com](http://www.plekkenpol.com)



**Plekkenpol**  
BUILDERS, INC

Remodeling

401 East 78th Street, Bloomington | 952.888.2225 | [www.plekkenpol.com](http://www.plekkenpol.com)

Learn More:



# Urban Lake Views

## Old World Charm

Sitting on the parkway with a front-row view of the lake, the home's exterior didn't match its picturesque surroundings. It was updated with bright white trim and a sunny yellow Dutch front door. On the second level, enlarging the dormer created much-needed space in the owners' suite and allowed for larger windows.



BEFORE



AFTER

The cottage-style home stands out with its circular covered front porch and wrap-around deck.

## Open Flow Main Level

Removing the walls on either side of the fireplace opened the main level. The hardwood floors and most of the architectural windows were retained to help preserve the home's character.

The foyer was opened by relocating the powder room and eliminating a front closet (far right). This provided space for a mud room area between the front door and sliding patio doors. Wood paneled walls in the new powder room match the walls in the sun room.



The wood-wrapped sun room with its wall of lake-facing windows sits just off the living room.



A built-in bench, hooks and overhead cabinets serve as a mud room. The powder room is on the right.

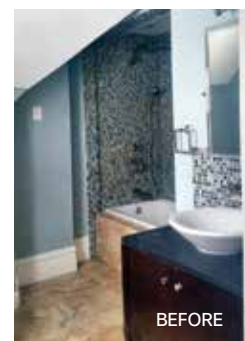


AFTER

AFTER

## Enlarged Owners' Suite

Sloped ceilings and odd angles in the owners' bedroom presented a challenge. Removing walls and enlarging the dormer created a more functional space with an amazing lake view (far left). The exposed brick accent wall was created using leftover brick from the dismantled main floor chimney.



BEFORE

A new double vanity was added in the enlarged bath. The old tub/shower combo, tucked in a dark corner, was replaced with an airy walk-in shower with clear glass panes and a built-in bench.

Design by Lisa Ball  
Photos by Spacecrafting



Kerrick Ekstrom

## Meet our Newest Production Supervisor **Kerrick Ekstrom**

We are pleased to introduce the newest member of our Production Supervisor team! **Kerrick Ekstrom** recently rejoined Plekkenpol Builders. Not only does he have a history with our company, but he also brings years of experience in carpentry, remodeling and supervision.

“I love remodeling because no two projects are the same, and I love the challenge of making old look and be new,” said Kerrick. We are excited to welcome him back to Plekkenpol Builders!

## MyVillager Newspaper Featured Article



Garage-to-Office Transformation

### Garage-to-Home Office Conversion

Plekkenpol Builders was featured on August 31 in *MyVillager*, the neighborhood newspaper of Highland Park and Mac-Groveland in Saint Paul. The spotlight was on our unique garage-to-home office conversion project.

Our clients had been working from home and desired a larger, dedicated home office. To create the space within the home's existing footprint, we converted their attached garage into a home office. The new interior room is exactly what our clients envisioned – fully insulated and temperature-controlled with plenty of space for two people to work comfortably. *MyVillager* highlighted the project as a unique solution for finding space on a smaller city lot.

## Thank You for Another Successful Showcase®

We would like to thank all of our visitors for helping make the 2022 Fall Parade of Homes Remodelers Showcase a success! We enjoyed meeting everyone who toured our whole house remodel in Minnetonka. If you missed the Showcase, photos of this home, as well as past Showcases, can be viewed on our website at [www.plekkenpol.com/gallery/showcase](http://www.plekkenpol.com/gallery/showcase).



Showcase Weekend

## Toys for Tots

We are a 2022 Toy Drop-Off Site!



This holiday season, Plekkenpol Builders will once again serve as an official drop-off site for Toys for Tots Twin Cities. **We will be collecting new, unwrapped toys at our office from November 14–December 14, 2022.** Please consider dropping off a toy for a child in need. All toys are distributed to children within our own community!

## Nextdoor “Neighborhood Favorite”



Plekkenpol Builders was named a 2022 *Neighborhood Favorite* on Nextdoor, a social networking service for neighborhoods.

*Neighborhood Favorites* is an awards program recognizing local businesses committed to helping their neighborhoods thrive. Winners are determined based on the number of recommendations a business receives. We are thrilled to know that people are spreading the word about us to their neighbors!

## Fall Chore Checklist *Prepare Your Home for Colder Weather*

**Clean your gutters.** A build up of leaves and other debris can prevent gutters and downspouts from draining properly. Improper draining may cause water to spill over the gutters and lead to foundation/basement damage and damage to fascia boards. In the winter, ice dams may form, causing snow to melt underneath your shingles and into your home.

**Inspect your roof.** Damaged or loose shingles can let in water and ice and cause interior damage.

**Test your smoke and carbon monoxide detectors.** Remember to change the batteries twice a year.

Source: BBB

**Check window and doors for air leakage.** Adding caulk and weather stripping helps prevent leakage of cold air into your home as well as spiders and insects. Also check where pipes and wires enter your home.

**Inspect your driveway.** Frequent freezing and thawing conditions, along with tree roots and ground shifting, can cause driveways to develop areas of needed repair. Fall is a great time to fill cracks and seal coat.

**Schedule HVAC maintenance.** According to the U.S. Department of Energy, preventive maintenance can help save you up to 25% in energy costs.

**Tend to the outside water supply.**

Cover up outside water spigots to help keep the exterior pipes from freezing. Empty hoses and move them indoors.

**Sweep your chimney.** Remove soot and possible creosote build-up to reduce the risk of a fire and improve the efficiency of your fireplace.

**Change the direction of your ceiling fan.** In colder months, turn fan blades clockwise to move warm air down.



Remodeling

**Plekkenpol**  
BUILDERS, INC

401 East 78th Street  
Bloomington, MN 55420  
(952) 888-2225  
www.plekkenpol.com

## Inside:



- **Urban Lake Views**  
Old World charm meets modern elegance in this lake-facing Minneapolis home
- **In the News**  
Meet our newest Production Supervisor
- **Fall Chore Checklist**  
Prepare your home for colder weather

- **Project Snapshot**  
Historically preserved main level fireplace



Be the first to hear about promotions and events—Like Us on Facebook!

Licensed & Insured | MN Lic BC001797

## PROJECT SNAPSHOT

# Turn-of-the-Century Two-Sided Fireplace

The room divider fireplace features a vertical wine rack on one side and floating bench on the other.

Built in 1900, the two-sided fireplace was the home's focal point, though it was no longer operable. The house was being gutted and remodeled, but the owner was adamant about saving and restoring the historic fireplace.

Prior to remodeling, it sat awkwardly between two cased door openings. Supporting the structure while opening the main level was a complicated process, requiring both steel columns within the chimney and digging below to add a concrete footing. The restored and repaired fireplace features an inset wine rack on one side and a floating bench on the other.

The **Difference** is in the **Details**™



AFTER – Dining Room Side



AFTER – Living Room Side



BEFORE