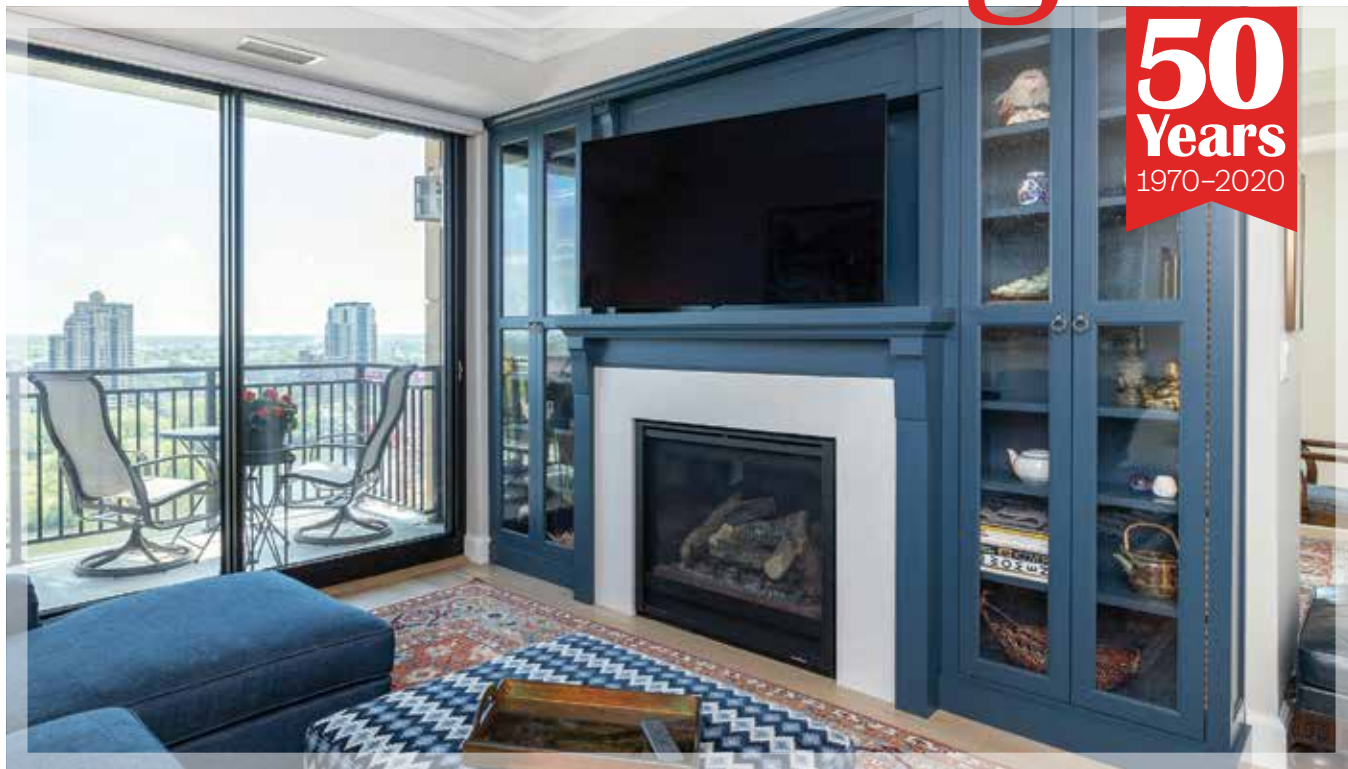


# Renderings

Vol. 8, No. 4

FALL 2021



MINNEAPOLIS

## High-Rise Living

The owners wanted to update their new downtown condo and, above all, maximize the amazing view from the 19th floor.

The homeowners loved everything about living in downtown Minneapolis – the vibrant city life, the diverse neighborhoods, the shopping and restaurants, all within walking distance. They were excited to move into their new 19th floor condominium, which included the amenities they desired and came with a stunning view overlooking both the Mississippi River and downtown. Their unit had originally been built as two units and modified by a previous owner. This meant plenty of space, but also presented some design challenges.



Stark white walls and woodwork and dark brown flooring dated the space.

*Continued on next page*

Contact Us Today for a Complimentary Remodeling Consultation!

(952) 888-2225 | [www.plekkenpol.com](http://www.plekkenpol.com)



**Plekkenpol**  
BUILDERS, INC

Remodeling

401 East 78th Street, Bloomington | 952.888.2225 | [www.plekkenpol.com](http://www.plekkenpol.com)

Learn More:



# High-Rise Living

## Challenging Layout

The floor plan was an interesting yet difficult space to design. There were different levels of flooring throughout, and the concrete walls couldn't be modified. Replacing the old wine cooler with a coffee machine (right) was one of the most complicated installations in the unit because of the furnace and plumbing lines located within the wall.



Vibrant navy blue is seen in the wet bar, beverage station, coffee bar and family room bookcase.

## Classic Color Palette

The owners desired a classic, refined color palette. For a fresh, modern feel, the new flooring is engineered white oak finished with a pickling whitewashed process.

Above all, they wanted to maximize the amazing view from the 19th floor. The biggest impact was removing the two layers of crown molding to raise the ceilings. This both modernized the space and provided the maximum amount of unobstructed viewing.



Existing two-tier crown molding obstructed the view.



Raising the ceilings opened and brightened the space.



## Exercise Room "Addition"

In a defined space with no ability to add on, we needed to get creative to add the exercise room the owners desired. A wall was added to section off a portion of the living room. Instead of a door, the owners opted for a unique statement piece: a Japanese shoji screen. Their "new" exercise room has one-of-a-kind view overlooking the heart of downtown.

Design: Diane Lumpkin | Photos: Brandon Rowell





Dan Hayes

## Happy Retirement! Project Managers Dan Hayes and Jim Kuzzy Have Retired!

We recently said goodbye and congratulations to two longtime Project Managers. **Dan Hayes** retired in July after 28+ years, and **Jim Kuzzy** retired on October 1 after 34 years managing projects for Plekkenpol Builders.

“I wanted to sincerely thank you for the opportunities you have given to me and Plekkenpol Builders to complete your remodeling projects over the years,” said Dan. “My wife and I are relocating to Santa Fe, New Mexico to enjoy the warmer weather and to remodel a home we have purchased there, along with traveling the United States in our teardrop camper. I will miss the daily camaraderie I enjoy with my co-workers and working with all of my clients, providing remodeling advice and services.”



Jim Kuzzy

Jim said, “It has been an immensely gratifying career of 34 years at Plekkenpol Builders. I have especially enjoyed and valued the long-term relationships I have formed and the collaborative efforts with clients to plan and execute projects to either remedy existing problems or improve the function and aesthetics of their home. Thank you for your confidence and trust in me and the entire staff at Plekkenpol Builders over all these years.”

Though they will be greatly missed, we wish Dan and Jim the best as they begin the next chapter of their lives!

## Thank You for Another Successful Remodelers Showcase®



We would like to thank all of our visitors for helping make the 2021 Fall

Parade of Homes Remodelers Showcase a success! We enjoyed seeing all of you who toured our stunning kitchen, bath and main level remodel in Golden Valley. If you missed the Showcase weekend, photos of this home, as well as past Showcases, can be viewed on our website at [www.plekkenpol.com/gallery/showcase](http://www.plekkenpol.com/gallery/showcase).



## Toys for Tots



We are a 2021 Toy Drop-Off Site!

Toys for Tots Twin Cities is anticipating a greater-than-normal need for toys this holiday season. Plekkenpol Builders will once again serve as an official drop-off site for the toy drive. **We will be collecting new, unwrapped toys at our office from November 22–December 15, 2021.**

Please consider dropping off a toy for a child in need. All toys are distributed to children within our community. Call us in advance if you'd like to do “contactless” drop-off. Thank you!

## Avivo Family Recovery Housing Ribbon-Cutting



**The ribbon is cut!** Seven Minneapolis apartment units are ready to become safe, stable housing where mothers can live with their children as they go through recovery at Avivo, a non-profit that specializes in chemical and mental health services, career education and employment services.

The ceremony on September 22 included media coverage and tours of the completed units, two of which were remodeled by Plekkenpol Builders. One speaker, a young woman who is moving into a unit with her 18-day-old baby, was grateful for the fresh start.

The apartments were all converted to better suit those who will be living in them, with additional bedrooms and more functional spaces for families. In one unit, Plekkenpol Builders added a half-wall in one of the larger bedrooms to create two smaller bedrooms, one for each of the kids.

These renovated units allow families to achieve wellness together, while living in dignified housing. The first families have already begun moving in!



Tours included two units renovated by Plekkenpol Builders. We were able to fully complete the units with the generosity of our partners including suppliers, vendors and designers.

*Top two photos courtesy of Housing First MN Foundation*

Remodeling

**Plekkenpol**  
BUILDERS, INC

401 East 78th Street  
Bloomington, MN 55420  
(952) 888-2225  
www.plekkenpol.com

## Inside:



- **High-Rise Living**  
A fresh update for a 19th floor downtown condo
- **In the News**  
Two Project Managers retire, Avivo Recovery Housing Ribbon-Cutting and more!
- **What is a Shoji Screen?**  
A Japanese shoji screen is both a room divider and unique statement piece



Be the first to hear about promotions and events—Like Us on Facebook!

Licensed & Insured | MN Lic BC001797

## What is a Shoji Screen?

A Japanese shoji screen is both a room divider and beautiful statement piece.

A shoji screen is a translucent screen that typically acts as a partition to provide privacy and diffuse light throughout the room. Japanese shoji screens date back thousands of years and are still popular today as displays of art and functional furnishings. Shoji screens can be inner or outer doors and normally consist of a latticed screen covered in white paper.

In a recently remodeled downtown condo, instead of a door, the owners opted for a unique and beautiful shoji screen. They had originally ordered the screen from a manufacturer in Japan; however, due to COVID-19-related issues, shipping was significantly delayed. Instead, the screen was handcrafted in Minnesota by a local cabinetmaker. It is as striking as it is useful.



The **Difference** is in the **Details**™