

Renderings

Vol. 5, No. 3

SUMMER 2018

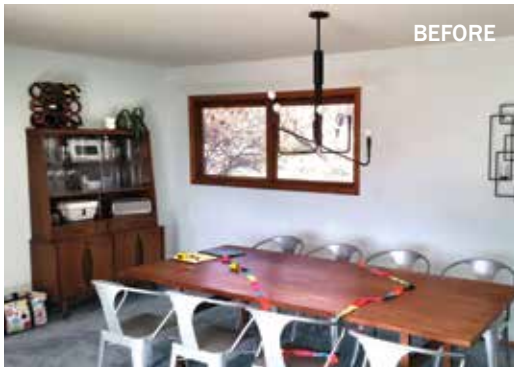
BLOOMINGTON



Fall Preview!

AFTER

Tour this bright, contemporary and open kitchen and main floor remodel during this fall's Parade of Homes Remodelers' Showcase



BEFORE

Built in the late 1960s, this home's segmented rooms and closed off kitchen were not functioning efficiently for the new homeowners. The family had recently purchased the home and loved its scenic location near the Minnesota River bluffs as well as the family-friendly neighborhood. However, the home's poorly laid out and segmented interior desperately needed a modern upgrade.

After remodeling, what was once a fragmented and dated kitchen, dining room and living room is now one light-filled great room with a wall of south-facing windows overlooking the wooded backyard. The kitchen was relocated from the rear of the home to the front to enhance functionality and create a more naturally flowing floor plan.

Continued on next page

"The work was done quickly and carefully, and the whole team was great to work with. The kitchen looks AMAZING! We can't thank you enough!" – Homeowners

Contact Us Today for a Complimentary Remodeling Consultation!

(952) 888-2225 | www.plekkenpol.com



Plekkenpol
BUILDERS, INC

Remodeling

401 East 78th Street, Bloomington | 952.888.2225 | www.plekkenpol.com

Learn More:



Fall Preview Cont.



Dining Room AFTER



Dining Room BEFORE

Bright, Open & Cohesive

The remodel extends to the foyer, dining room and sunken family room, creating a cohesive design throughout. Rustic Iberian Hazelwood flooring has a natural feel and draws the large area together. Natural light is abundant. Though the home's footprint was unchanged, the newly open floor plan makes it feel significantly larger.

Photos by Brandon Rowell

After opening up the main level, the home feels brighter and larger.

Classic Finishes

The kitchen was relocated to front of the the home and updated with modern finishes and time-saving appliances. Details include white quartz countertops, plenty of custom storage including two appliance garages, and a unique matte black sink and faucet. Classic white bevel gloss subway tile extends from the counter to the ceiling making the space feel larger. Open shelving is perfect for displaying decorative items.

The new center island with seating is a convenient gathering spot, and the layout and open floor plan are ideal for entertaining. The result is a bright, contemporary and functional space that will be enjoyed for years to come. The family is thrilled with the results!



■ *Tour this home!* ■

September 28-30, 2018

Parade of Homes
**Remodelers
Showcase**[®]
PRESENTED BY BATC

151 Spring Valley Drive
Bloomington, MN

For details and directions:
www.plekkenpol.com



Kitchen BEFORE



Kitchen AFTER

How to Design for Independent Living

Remodeling can make your home safe and comfortable as you “age-in-place”

If you are like the majority of Americans, you want to continue living at home in a familiar environment throughout your maturing years. Aging-in-place means living in your home safely, independently and comfortably, regardless of age or ability level. Since the majority of homes are not well designed for this, many homeowners find that remodeling is the answer.

A Certified Aging-in-Place Specialist (CAPS) such as Plekkenpol Builders can modify your home to allow for better access to the features you need to use, ease of movement and reducing accidents and falls throughout your home. CAPS design principles focus on aesthetically enriching, barrier-free environments, while taking your current and future circumstances into consideration. Typical changes may include:

Getting safely into and out of the house:

- Attractive ramps or a zero-step entrance for the home
- A package shelf by front door
- Handrails at existing steps and porches
- Fewer or no stairs

Changes in the kitchen:

- Lever-handle faucets with pull-out spray
- Raised dishwasher to avoid back strain (a good idea for front-loading washers and dryers, too)
- Rolling island that can be placed under the counter
- Revolving corner shelves and

- pull-out shelves with larger, friendlier knobs and pulls
- Pull-out cutting board
- Cooktop with controls on front

Changes in the bathroom (the number one place for accidents):

- Grab bars in the shower
- Lever handles on faucets
- Shampoo nooks in the wall
- Curbless showers so that there is nothing to step over (and can be rolled into if a wheelchair becomes necessary later)
- Tub and shower controls moved closer to entry point
- Anti-scald, temperature and pressure balanced tub shower valves for safer bathing
- Higher toilets with non-slam seats and lids

Moving around within the house:

- Improved lighting with recessed fixtures
- Lever handles on doors and windows
- Lower light switches and thermostats; raised outlets
- Planning for a future elevator by stacking closets
- Adding blocking in walls for future chair lift at stairs
- Wider doors to accommodate wheelchairs and walkers

Virtually all rooms can be improved upon, even closets and garages. Plekkenpol Builders can assist in remodeling your home to allow for accessibility and safety. Contact us for a complimentary consultation!

Source: nahb.org



This accessible guest suite addition features a newly created entry from the garage (right) with a ramp from grade level to the main floor.



A bathroom vanity that is open below can accommodate a wheelchair or walker.



A curbless, roll-in shower is ideal for someone with limited mobility.

Remodeling

Plekkenpol
BUILDERS, INC

401 East 78th Street
Bloomington, MN 55420
(952) 888-2225
www.plekkenpol.com

Inside:



- **Fall Preview!**
Get a sneak peek at our 2018 Fall Remodelers Showcase home
- **Designing for Independent Living**
Remodeling can make your home safer and more comfortable as you age
- **In the News**
Meet the newest members of our team!



Be the first to hear about promotions and events—Like Us on Facebook!

Licensed & Insured | MN Lic BC001797

In the News *Employee Spotlight!*

Plekkenpol Remodeling
BUILDERS, INC

Plekkenpol Builders is pleased to announce the newest members of our team!



Paul LeGrand
Client Account
Manager

Paul joins Plekkenpol Builders as Client Account Manager, with over 30 years of experience in construction sales

and management. In his role, Paul will oversee the Project Management and Design Groups, reviewing and approving all projects and working with suppliers to source products and reduce costs. He will work closely with management to revitalize current company systems and processes, focusing on customer service.

paul@plekkenpol.com



Sarah Maly
Project
Manager

Sarah brings 15 years of high-end design and remodeling experience to Plekkenpol Builders. She is

a member of the National Kitchen and Bath Association and is accredited as a Certified Kitchen Designer (CKD).

sarah@plekkenpol.com



Jeff Johnson
Project
Manager

Jeff has 25 years of experience in all areas of residential construction, including 17 years as a

licensed contractor. He brings a strong understanding of MN building codes and regulations to Plekkenpol Builders.

jeff@plekkenpol.com

If you have been considering remodeling, one of our new or seasoned employees would be delighted to meet with you. See how Plekkenpol Builders can create a unique project customized to fit your lifestyle!

When Plekkenpol Builders remodels your home, “*The **Difference** is in the **Details**™*”