

# Renderings

Vol. 2, No. 3

SUMMER 2015



## Expanding the Master Suite

An Edina family desired a remodeled master suite including a large walk-in closet and dressing area with lighted vanity—and they knew just where to find the space.

**An awkward layout in the master suite was causing problems.** The closet was undersized and difficult to access. There was not enough space for organized packing and unpacking for trips, making mornings a headache for the homeowner, a frequent traveler.

In addition, the master bath was outdated and missing amenities that the homeowners desired, such as a large steam shower and a separate water closet. The master suite was not meeting their everyday needs.

*Continued on next page*



Before



The original master closet, above, was not satisfying the homeowners' everyday needs.

The new dressing table, right, is perfect for organizing items and quickly packing a suitcase. The suitcase fits in a custom-made niche below when not in use.



# Plekkenpol Remodeling

BUILDERS, INC

401 East 78th Street, Bloomington | 952.888.2225 | [www.plekkenpol.com](http://www.plekkenpol.com)

Learn More:



# Expanding the Master Suite Cont.

## Finding space

In remodeling, the number one thing on the homeowners' wish list was the closet/dressing area, where one partner could get up early for work or travel and prepare without waking the other. A separate area, closed off with pocket doors, was the ideal solution.

But where to put this fabulous new dressing area? They didn't want to add on. With the help of Plekkenpol Builders, they began looking at the existing footprint of the home. Adjacent to the master bedroom was a smaller unused bedroom. It was the perfect size and location; all that was needed was some clever reimagining of the space.

The floorplans below show how the extra bedroom was transformed into the master suite's new walk-in closet. In addition, the floorplan itself became more functional and user-friendly.



The steam shower features transparent interior panels (upper right) that allow for light transfer.

## Luxurious amenities

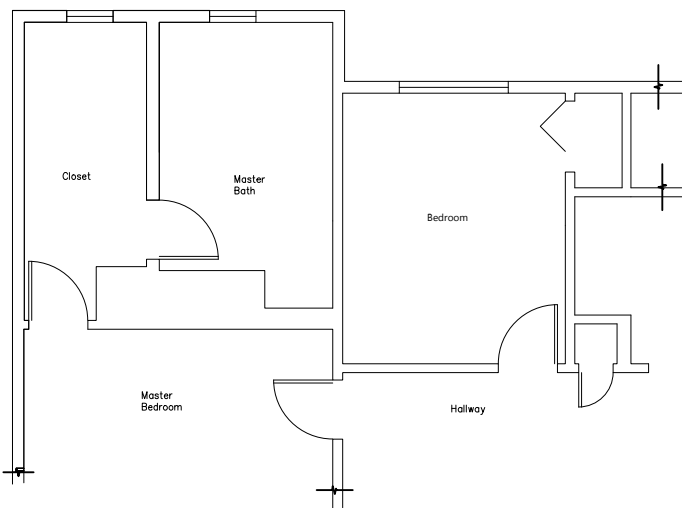
The bath was entirely remodeled and features the amenities the homeowners desired, including a steam shower with bench seating, a gorgeous custom double vanity and a separate water closet. Details include transparent interior panels that allow for light transfer and keep the master suite feeling bright and open.

"In all, we feel that Plekkenpol Builders has provided us a high quality team that completed high quality work," say the homeowners. "You have helped us modernize our home from its 1960s style to a comfortable floor plan that we enjoy every day. Obviously we would use your company again and wouldn't hesitate to recommend your services to others."

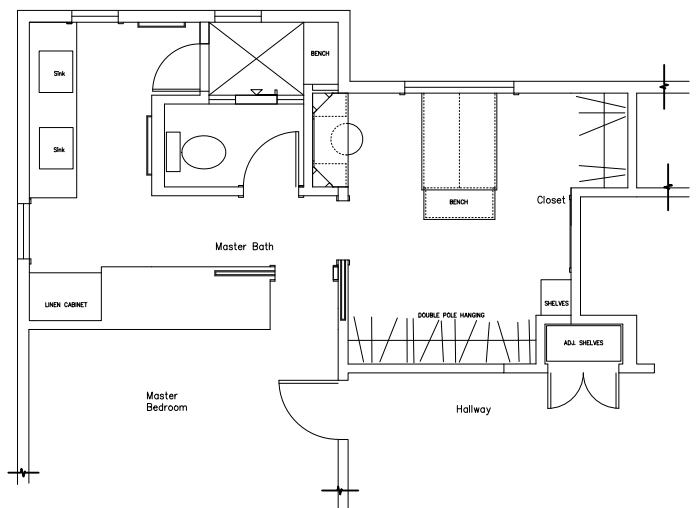


The double vanity is custom made and features a natural quartz countertop and vibrant brushed nickel faucets.

Professional Photography by Brandon Rowell



Master Suite **Before**



Master Suite **After**





Beautiful three-season porch with an exposed beam vaulted ceiling and infrared heaters.



Interior and exterior views of a three-season porch complete with fireplace and wall-mounted TV.



Relaxing on a three-season porch is the perfect way to enjoy Minnesota's changing seasons.

# Enjoy the Changing Seasons with a Three-Season Porch

A three-season porch brings the outdoors in, creating added living space that can be utilized from early spring until late fall.

**First things first: what is the difference between a three-season porch, a four-season porch and a screened porch?**

## Three-season porches

Three-season porches are enclosed spaces that are typically not heated, therefore they are usually not used in the cold winter months. They are, however, ideal for cool mornings and evenings in spring or fall, extending use of the room during the year. Because they normally have some sort of glazing or window system, three-season porches are perfect for bringing fresh air inside and keeping rain, bugs, dust and pollen outside.

## Four-season porches

Four-season porches or “sunrooms” are fully insulated and normally have heating and air conditioning. These rooms can be enjoyed 365 days a year, regardless of the weather.

## Screened porches

A screened porch is a covered porch that has screened openings instead of windows. The screens serve as barriers from insects and inclement weather. Screened porches are used mainly in the summer months.

**What types of furnishings can be used in a three-season room?**

There is no need to limit yourself to “outdoor” furniture—three-season porches can be furnished much like interior rooms. Many homeowners include amenities such as ceiling fans, recessed lighting, televisions and outdoor fireplaces. Interesting architectural details are often included such as exposed beam vaulted ceilings and floor-to-ceiling walls of windows.

**How can I continue to enjoy a three-season porch as the temperature starts to drop?**

Three-season porches are not generally insulated, nor do they have heat or air conditioning. However, the seasons may be extended through the use of infrared heaters, in-floor heating or a thru-the-wall split-system, which can both heat and cool.

A three-season porch can increase value and add curb appeal. But most importantly, it will make your home a more enjoyable place for you and your family to enjoy Minnesota's varied and changing seasons.



Remodeling

# Plekkenpol

BUILDERS, INC

401 East 78th Street  
Bloomington, MN 55420  
(952) 888-2225  
www.plekkenpol.com

## Inside:



- **Expanding the Master Suite**  
A large walk-in closet and dressing area is a gorgeous addition to the master suite
- **Three-Season Porches**  
Bring the outdoors in and enjoy the changing seasons

- **Custom-Made for Entertaining**  
A stunning new custom bar is the perfect excuse to entertain!



Be the first to hear about promotions and events—Like Us on Facebook!

Licensed & Insured | MN Lic BC001797



Before

“Working with Plekkenpol Builders has been a joy.”

“How would you like to have a project undertaken by the most talented, respectful, caring, conscientious, nicest and most responsive people? Well, that is what you get if you contract with Plekkenpol Builders. From the first meeting to the final day, working with Plekkenpol Builders was a joy and a privilege. We wouldn't do business with anyone else.”

— Homeowners, Edina, MN

## Custom-Made for Entertaining

When remodeling their Edina home, the homeowners, who love to entertain, desired a custom bar—but there was no space for it.

**The solution was found in eliminating a small pantry and hall closet,** opening up the foyer and making the home appear much larger and more spacious. This also provided the space needed for the stunning new bar—a statement piece with retractable doors, a lighted onyx bar top, an antiqued mirror backsplash and custom wine rack.



After

Plekkenpol Remodeling

BUILDERS, INC

www.plekkenpol.com